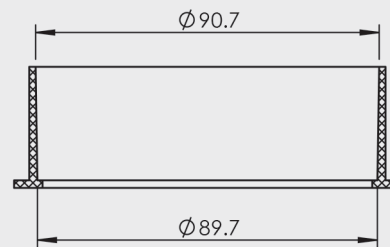
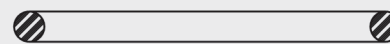
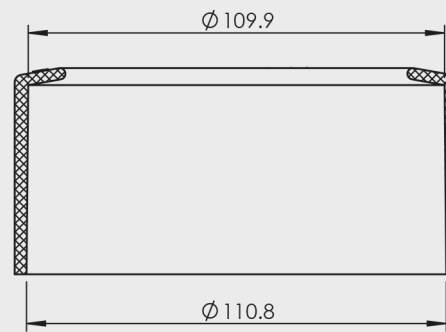
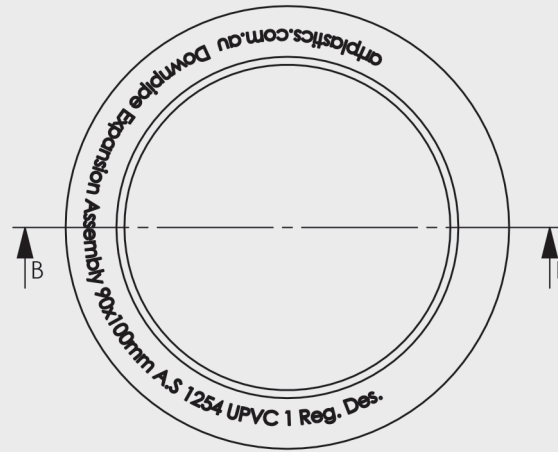




# 100x90mm DOWNPIPE EXPANSION JOINT

- Easily converts 90mm into 100mm pipe
- Great for reactive and sandy soils
- Allows for joint movement at ground levels for downpipes
- Easy to install

CODE	OUTLET SIZE	FINISH	CARTON QTY
42331	90mm	PVC	100



SECTION B-B

